



World Water Week 2018

Water, ecosystem and human development

Linking water ecosystem services and migration in Inner Niger Delta

26 August -31 August 2018

Beteo Zongo, Ph.D

Environmental Economist, Wetlands International

Auteurs: Zongo B, Keïta K, Gareyane M, Diallo M, Gado D.A, Diawara L.M, Maïga I.A, Weert V.F, Baker C

Inner Niger Delta

Wetlands in Africa are considered as blue safety cords in the dessert which are an important source of water and nutrients necessary for biological productivity and often sheer survival of people.

The Inner Niger Delta (IND) in Mali is the largest and most populous of inland wetlands in West Africa and ranks second only to the Okavango Delta in Botswana.



Biodiversity

The IND is recognized today as a wetland of international importance which was classified in February 2004 by UNESCO as a World Heritage Ramsar site for humanity.

It is highly productive and biologically diverse ecosystems, fed by seasonal floods.

The IND has various native habitats (flooded forests and *bourgou* pasture) and hosts several endemic species: 112 species of water birds, 134 species of fish, and mammals such as hippopotamus and manatee.



Ecosystem services

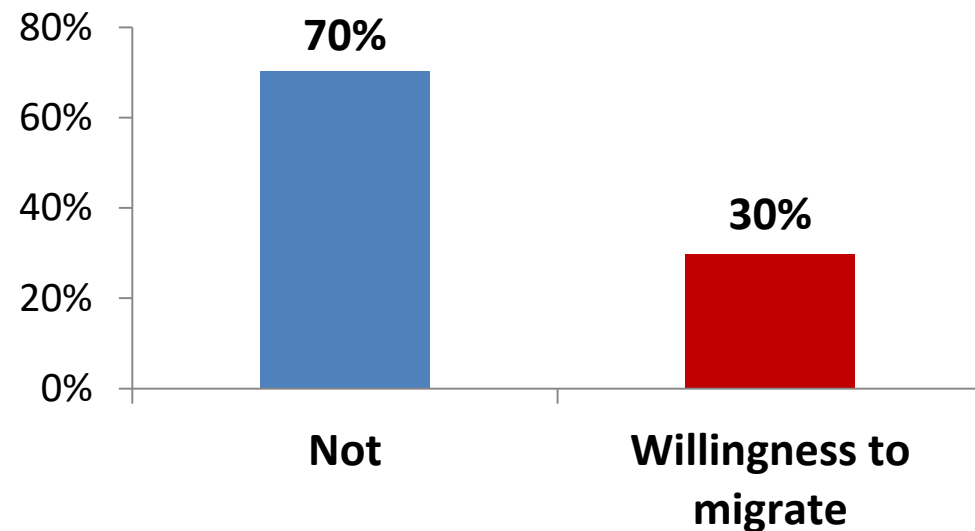
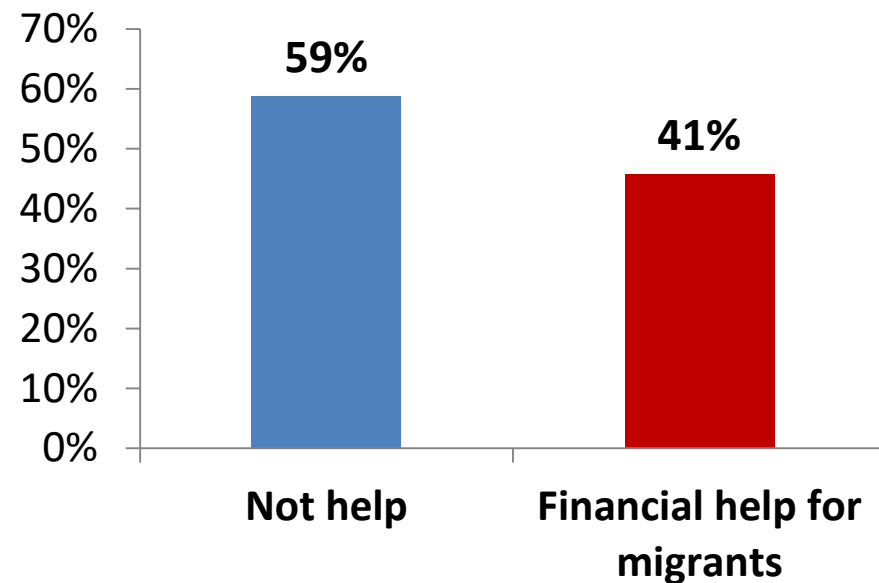
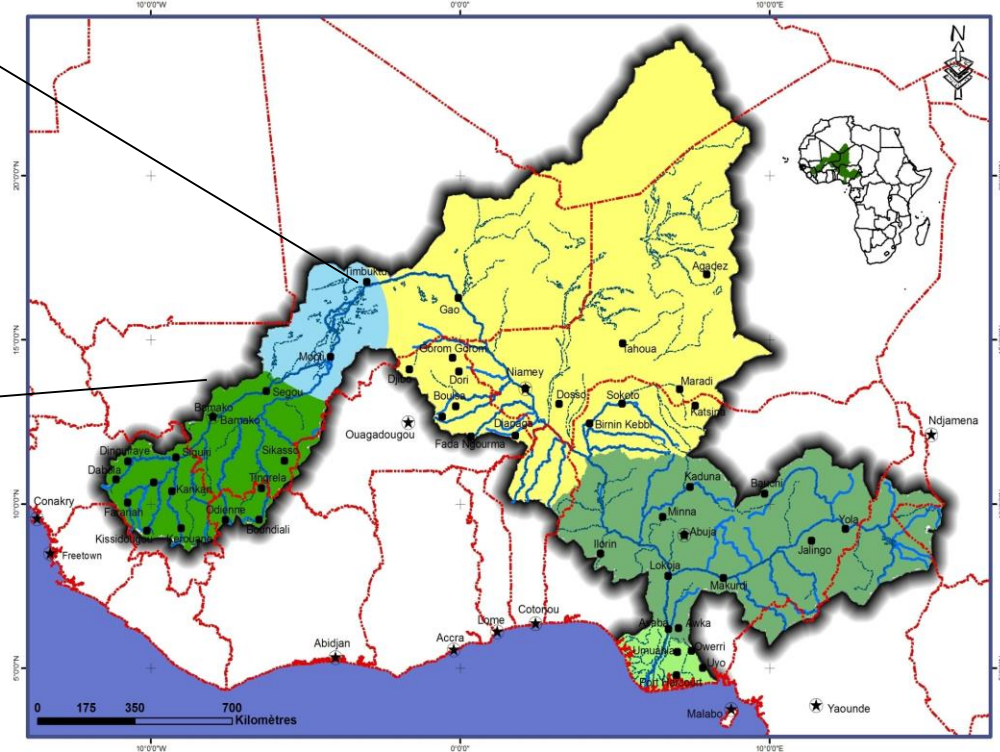
- ❑ The Inner Niger Delta plays a crucial role in shaping culture and driving local and national economies
- ❑ Delta covers just 1.6 per cent of Mali, but it provides pasture for a third of the country's cattle, delivers 8 per cent of its GDP and sustains 14 per cent of the population

Almost up to 2 million of people composed mainly of fishermen, farmers and breeders depend on the vitality of these wetlands.



Migration in Inner Niger Delta

This study is based on **1200 households'** random survey from **60 villages** in Inner Niger Delta. The survey was conducted during October to December 2017 in Mopti and Segou regions in Mali.



Determinants of Households' Willingness to Migrate

The study showed that Water ecosystems provide important services to people of Inner Niger Delta but they continue migration in the other countries

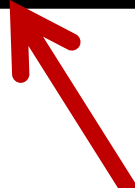
Willingness to migrate in Inner Niger Delta (Logistic regression model)

- Factors :**
- ✓ Age
 - ✓ Inondation
 - ✓ Income
 - ✓ Fodder
 - ✓ Water for livestock
 - ✓ Fishes
 - ✓ Security

- Factors:**
- ✓ Education
 - ✓ Households size,
 - ✓ Unemployment
 - ✓ Soil erosion
 - ✓ Insufficient of arable land



To limit migration, it is necessary to restore and conserve water ecosystem by innovations in climate adaptation, integrated water resource management and people sensitization.



Thank you for your attention

Contactez-nous: www.wetlands.org/africa



2010 11 27